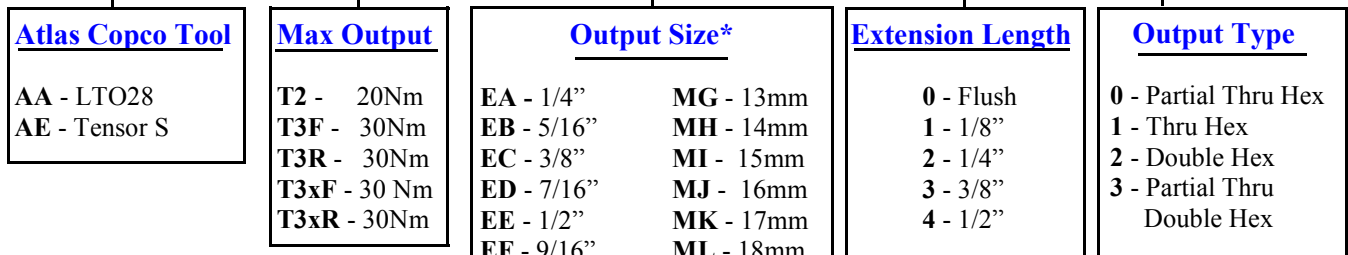


Tube Nut Part Number Code

The last six digits of Kramer Air Tool's part number code determine the tool's output size, extension length, and output type. Please refer to the diagram and chart below to determine the part number that best suits your needs.

Example:

AA T2 EA 0 0



Atlas Copco Tool	
AA	LTO28
AE	Tensor S

Max Output	
T2	20Nm
T3F	30Nm
T3R	30Nm
T3xF	30 Nm
T3xR	30Nm

Output Size*	
EA	1/4"
EB	5/16"
EC	3/8"
ED	7/16"
EE	1/2"
EF	9/16"
EG	5/8"
EH	11/16"
EI	3/4"
EJ	13/16"
EK	7/8"
EL	15/16"
EM	1"
EN	1 1/16"
MD	10mm
ME	11mm
MF	12mm
MG	13mm
MH	14mm
MI	15mm
MJ	16mm
MK	17mm
ML	18mm
MM	19mm
MN	20mm
MO	21mm
MP	22mm
MQ	23mm
MR	24mm
MS	15mm
MT	26mm
MU	27mm

Extension Length	
0	Flush
1	1/8"
2	1/4"
3	3/8"
4	1/2"

Output Type	
0	Partial Thru Hex
1	Thru Hex
2	Double Hex
3	Partial Thru Double Hex

*Socket Compatibility		
	Inch	Metric
T2	EAEE	MG
T3	EC-EI	MG-MM
T4	EE-EN	MG-MU

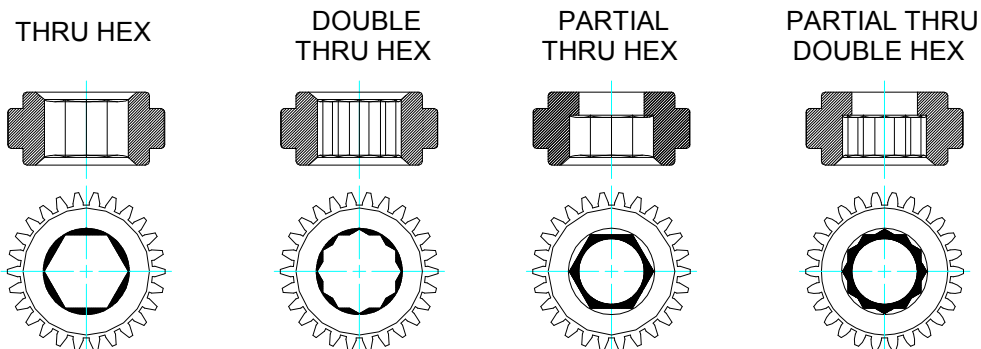
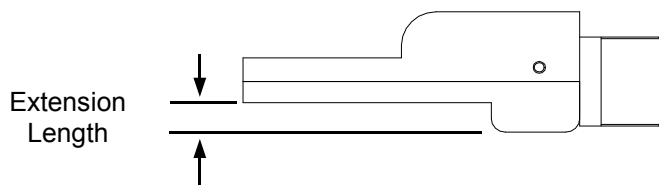
Note: Tube nuts require slow speed, low power reverse function on nut runners.

Approximate tube nut head weights are as follows:
 T2— 1.5 lbs.
 T3—1.8 lbs.
 T4—2.15 lbs.

When ordering a tube nut wrench with the tube nut head, please use the following for the part #:

Tool model #—tube nut head model #

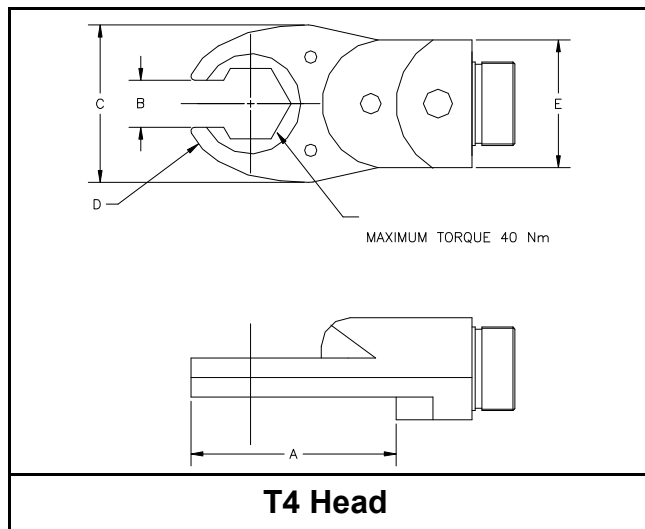
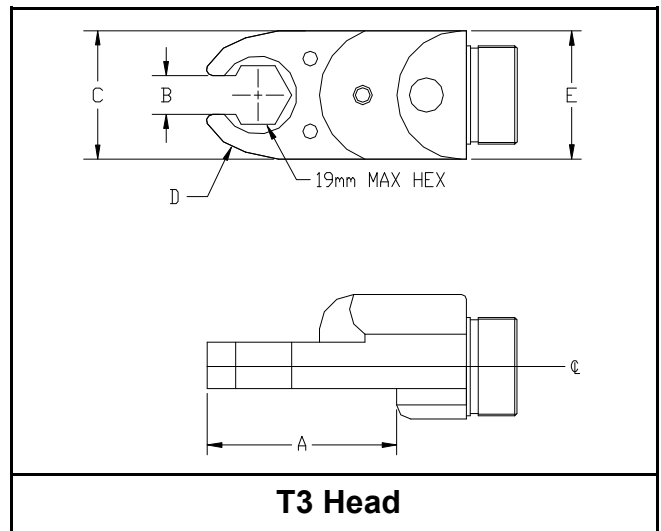
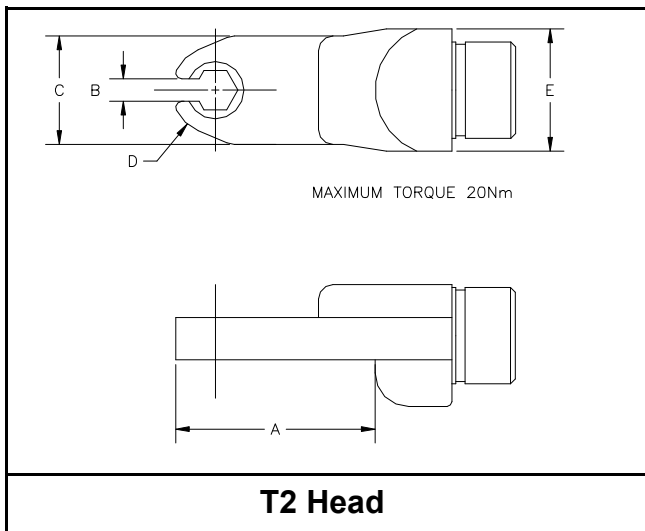
Ex: LTO 28 SR005 - AAT2XXXX
Ex: ETV S7 40 - AET4XXXX



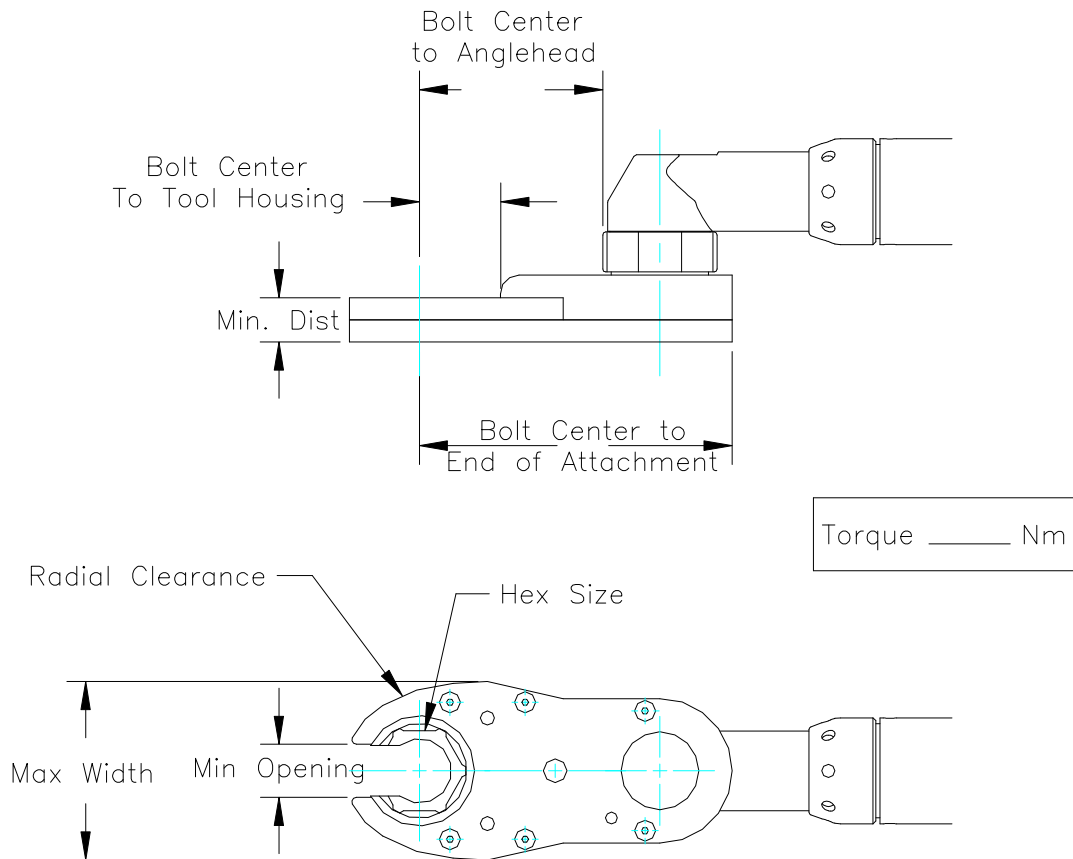
Standard Sizes

**KRAMER AIR TOOL
SALES AND SERVICE**

Tubenut Type	Free Speed rpm	Maximum Torque		Socket Size		A		B		C		D		E	
		Ft.Lbf	Nm	in	mm	in	mm	in	mm	in	mm	in	mm	in	mm
AA T2 AD T2 AET4	250	15	20	1/4" Thru 1/2"	- 13	2.66 68	0.33 8	1.42 36	0.57 14	1.6 41					
AA T3 AE T3 AD T3	180	22	30	3/8" Thru 3/4"	13 Thru 19	1.5 38	0.5 13	1.65 42	0.75 19	1.65 42					
AA T4 AD T4 AE T4	135	30	40	1/2" Thru 1 1/16"	13 Thru 27	2.02 51	0.71 18	2.38 60	1 25	1.93 49					



Do you have a tooling need where a “standard” tube nut head just won’t fit? Not to worry—Kramer Air Tool is ready to manufacture the tool for your specific application. Just provide the dimensions from the diagram below and we will design and manufacture an attachment to meet your needs.



Quality.

Our tube nut heads are manufactured and heat-treated using specially formulated materials assuring that the life of our tools far outlasts those of other manufacturers. That is our promise to you.