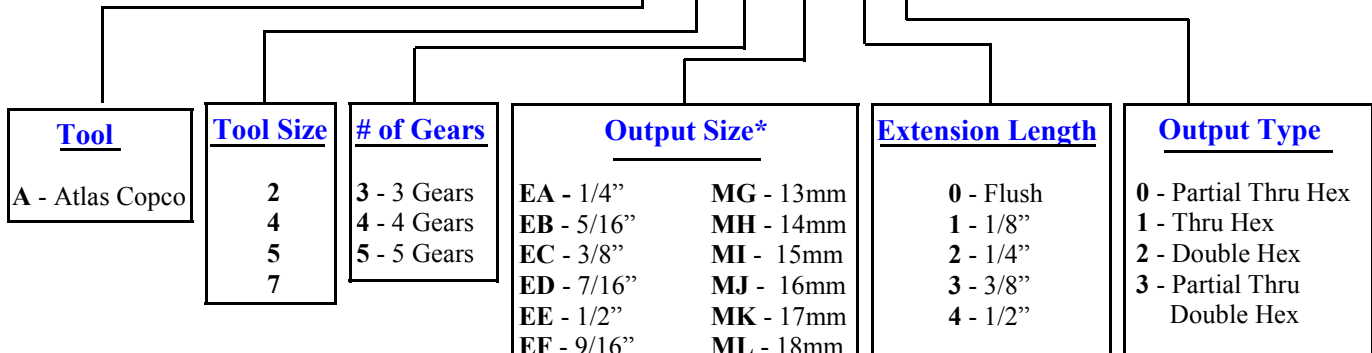


## Crowfoot Part Number Code

The last six digits of Kramer Air Tool's part number code determine the tool's output size, extension length, and output type. Please refer to the diagram and chart below to determine the part number that best suits your needs.

**KCF A 2 4 EB 2 3**



**\*Socket Compatibility**

	Inch	Metric
2	EA-EI	MG-MM
4	EA-EG	MG-MJ
5	EA-EG	MG-MJ
7	EA-EE	MG

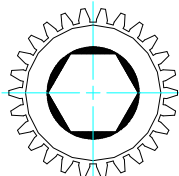
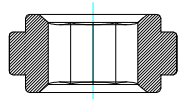
**Note:** 4 Gear Crowfoot will require tool to run in reverse rotation.

**When ordering a crowfoot wrench with the right angle head, please use the following for the part #:**

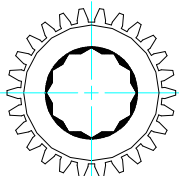
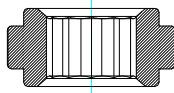
Tool model #—crowfoot model #

**Ex: ETV S7 30 -KCFA5XXXXX**

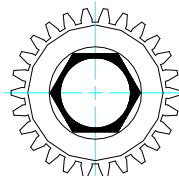
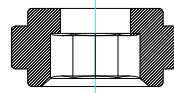
THRU HEX



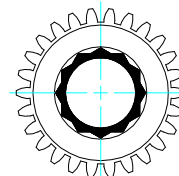
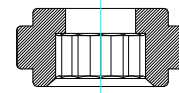
DOUBLE THRU HEX



PARTIAL THRU HEX



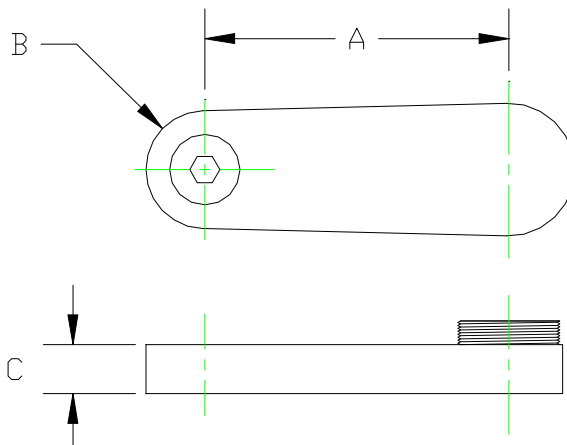
PARTIAL THRU DOUBLE HEX



## Standard Sizes

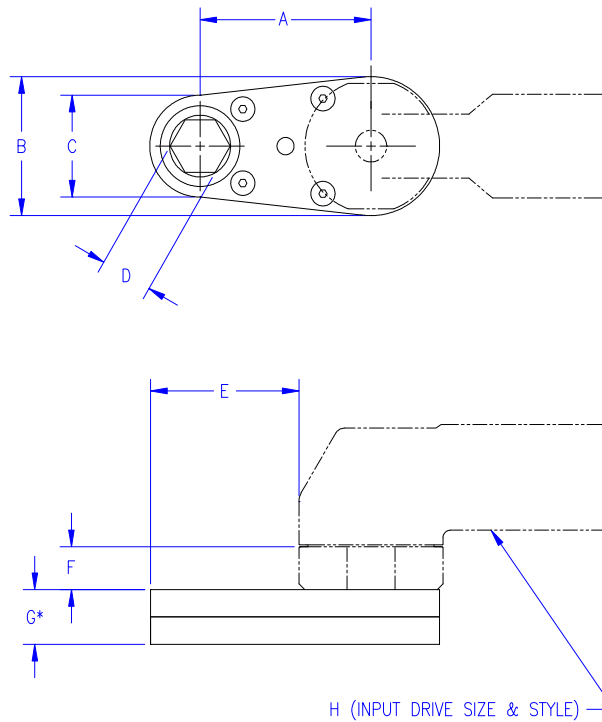
**KRAMER AIR TOOL  
SALES AND SERVICE**

Crowfoot Model	Max Hex (in/mm)	Max Torque (ft*lb/Nm)	# of Gears	A (in/mm)	B (in/mm)	C (in/mm)	Square Drive Size
		59 ft*lb 80 Nm	3	2.33" 59.2mm			
<b>KCF A2 XXXX</b>	0.75" 19mm	53 ft*lb 72 Nm	4	3.27" 88mm	0.79" 20mm	0.79" 20mm	1/2"
		47 ft*lb 64 Nm	5	4.60" 116.8mm			
		44 ft*lb 60 Nm	3	2.33" 59.2mm			
<b>KCF A3 XXXX</b>	0.75" 19mm	39 ft*lb 54 Nm	4	3.27" 88mm	0.79" 20mm	0.59" 15mm	1/2"
		35 ft*lb 48 Nm	5	4.60" 116.8mm			
		48 ft*lb 65 Nm	3	2.21" 56mm			
<b>KCF A4 XXXX</b>	0.63" 16mm	43 ft*lb 58Nm	4	3.28" 83.2mm	0.71" 18mm	0.79" 20mm	1/2"
		38 ft*lb 52 Nm	5	4.35" 110.4mm			
		33 ft*lb 45 Nm	3	2.13" 54.2mm			
<b>KCF A5 XXXX</b>	0.63" 16mm	29 ft*lb 40 Nm	4	3.20" 81.3mm	0.63" 16mm	0.59" 15mm	3/8"
		27 ft*lb 36 Nm	5	4.27" 108.4mm			
		22 ft*lb 30 Nm	3	1.60" 40.6mm			
<b>KCF A7 XXXX</b>	0.51" 13mm	20 ft*lb 27 Nm	4	2.40" 61mm	0.55" 14mm	0.59" 15mm	3/8"
		18 ft*lb 24 Nm	5	3.11" 79mm			



Do you have a tooling need where a “standard” Crowfoot head just won’t fit? Not to worry—Kramer Air Tool is ready to manufacture the tool for your specific application. Just provide the dimensions from the diagram below and we will design and manufacture an attachment to meet your needs.

(\*) indicates a dimension with a minimum stack up.



**Quality.**

Our Crowfoot heads are manufactured and heat-treated using specially formulated materials assuring that the life of our tools far outlasts those of other manufacturers. That is our promise to you.